

Milwaukee County COVID-19 vaccine data summary

Milwaukee County COVID-19 Epidemiology Intel Team

This report was updated on September 29, 2021 and includes data through September 27, 2021. Note that data for recent weeks may be under-reported due to lags in data entry.

Milwaukee County COVID-19 Vaccination Totals December 15, 2020 - September 27, 2021

	Milwaukee County	City of Milwaukee	Suburbs
Total vaccine doses administered	988,186	552,465	435,721
Pfizer	621,225	364,499	256,726
Moderna	335,571	169,271	166,300
Johnson & Johnson	31,390	18,695	12,695
Total individuals with one or more doses	530,133	299,664	230,469
Pfizer	324,909	192,547	132,362
Moderna	173,834	88,422	85,412
Johnson & Johnson	31,390	18,695	12,695
Total individuals completely vaccinated	489,443	271,496	217,947
Pfizer	296,222	171,885	124,337
Moderna	161,831	80,916	80,915
Johnson & Johnson	31,390	18,695	12,695

Percentage of Population Vaccinated December 15, 2020 - September 27, 2021

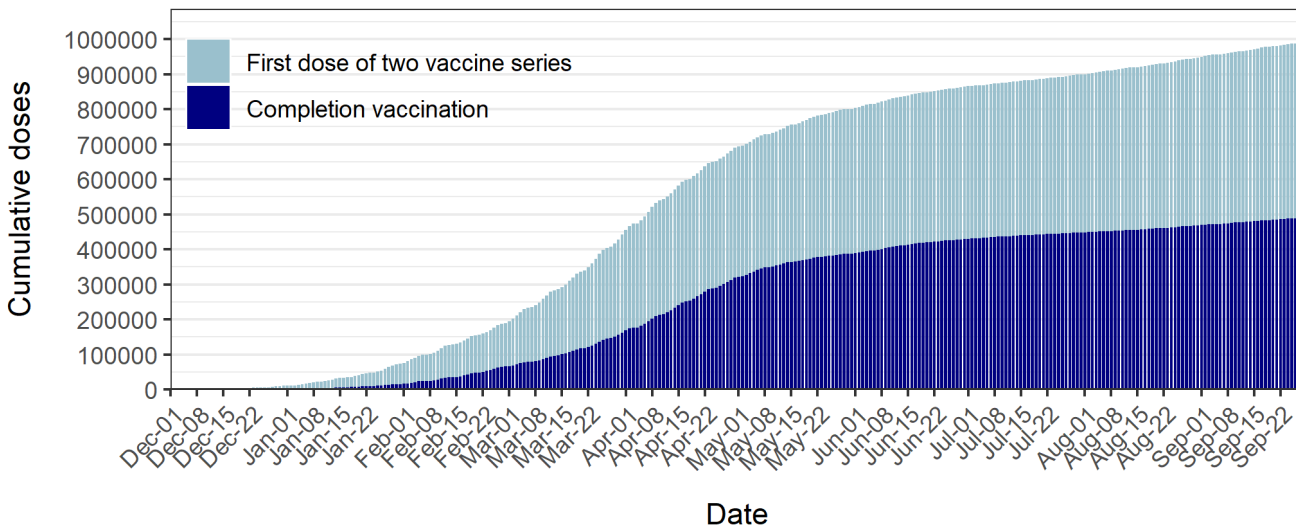
	Overall	Ages 12+	Ages 16+
Milwaukee County			
*Population	954,209	792,322	747,409
Received one or more doses	55.6%	66.9%	67.7%
Completely vaccinated	51.3%	61.8%	62.7%
City of Milwaukee			
*Population	596,886	489,445	456,809
Received one or more doses	50.2%	61.2%	62.7%
Completely vaccinated	45.5%	55.5%	57.1%
Milwaukee County Suburbs			
*Population	357,323	306,877	290,600
Received one or more doses	64.5%	75.1%	75.6%
Completely vaccinated	61.0%	71.0%	71.6%

*Population estimates from 2018 US Census American Community Survey

Cumulative and daily COVID-19 doses administered to Milwaukee County residents

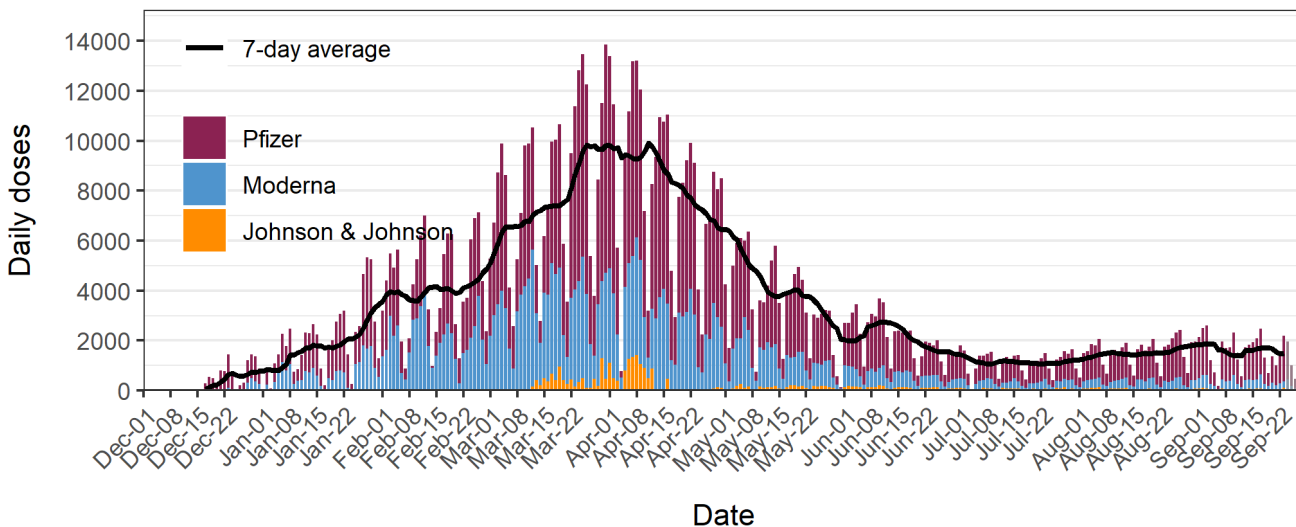
Figure 1 shows cumulative COVID-19 vaccine doses administered to Milwaukee County residents. A total of 988,186 doses have been administered from December 15, 2020 through September 27, 2021. The light blue color represents the first dose in a series (Pfizer or Moderna). The dark blue color indicates a completion dose (first dose of Johnson & Johnson or second dose of Pfizer or Moderna). **Figure 2** shows daily COVID-19 vaccine doses administered to Milwaukee County residents. The overlaid black line shows the 7-day average of daily doses and the bars are colored by vaccine: Pfizer (red), Moderna (blue), and Johnson & Johnson (orange). Daily doses peaked in late March to early April 2021 and have since declined until mid-summer when slight increases occurred in tandem with increasing cases thought to be driven by the delta variant.

Figure 1: Cumulative COVID-19 vaccine doses administered to Milwaukee Co. residents



Data source: Wisconsin Immunization Registry (WIR)
Created by the Milwaukee County COVID-19 Epidemiology Intel Team

Figure 2: Daily COVID-19 vaccine doses administered to Milwaukee Co. residents

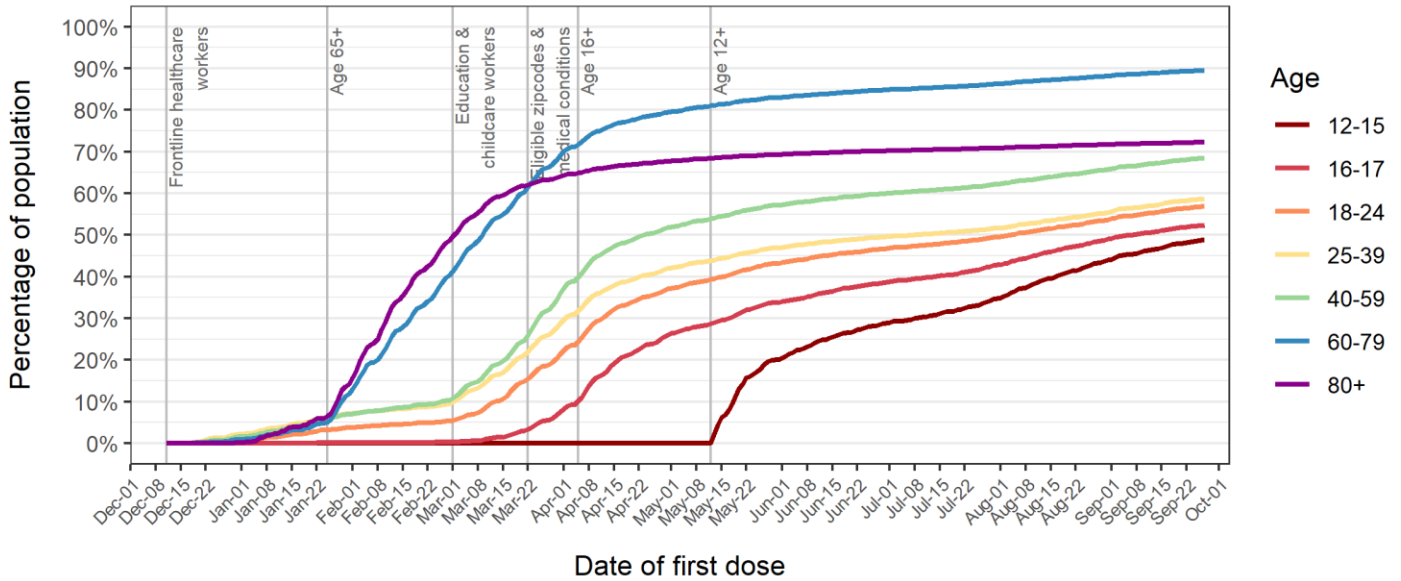


Data source: Wisconsin Immunization Registry (WIR)
Created by the Milwaukee County COVID-19 Epidemiology Intel Team

Percentages of Milwaukee County residents partially and completely vaccinated by age group

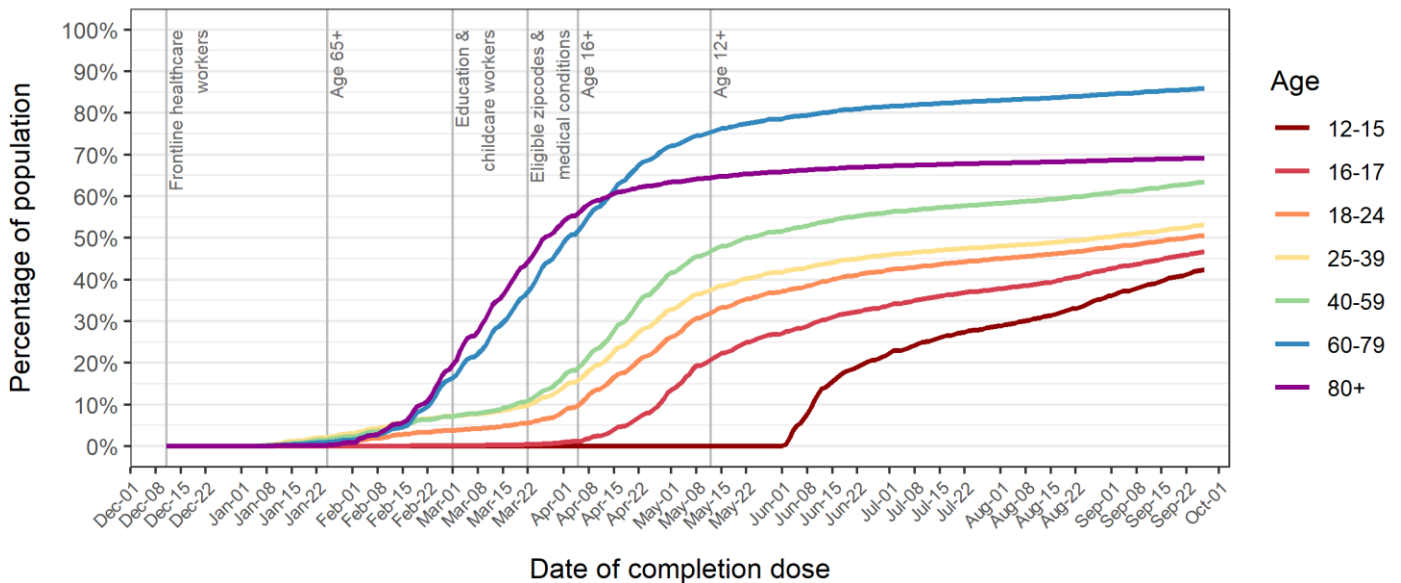
Figure 3 shows the percentage over time of Milwaukee County residents who received at least one dose of any COVID-19 vaccine by age group. **Figure 4** shows the percentage over time of Milwaukee County residents who are completely vaccinated with any COVID-19 vaccine by age group. The vertical lines show changes in vaccine eligibility in Milwaukee County.

Figure 3: Percent of Milwaukee Co. residents with at least one dose of any COVID-19 vaccine



Data source: Wisconsin Immunization Registry (WIR)
Created by the Milwaukee County COVID-19 Epidemiology Intel Team

Figure 4: Percent of Milwaukee Co. residents completely vaccinated with any COVID-19 vaccine

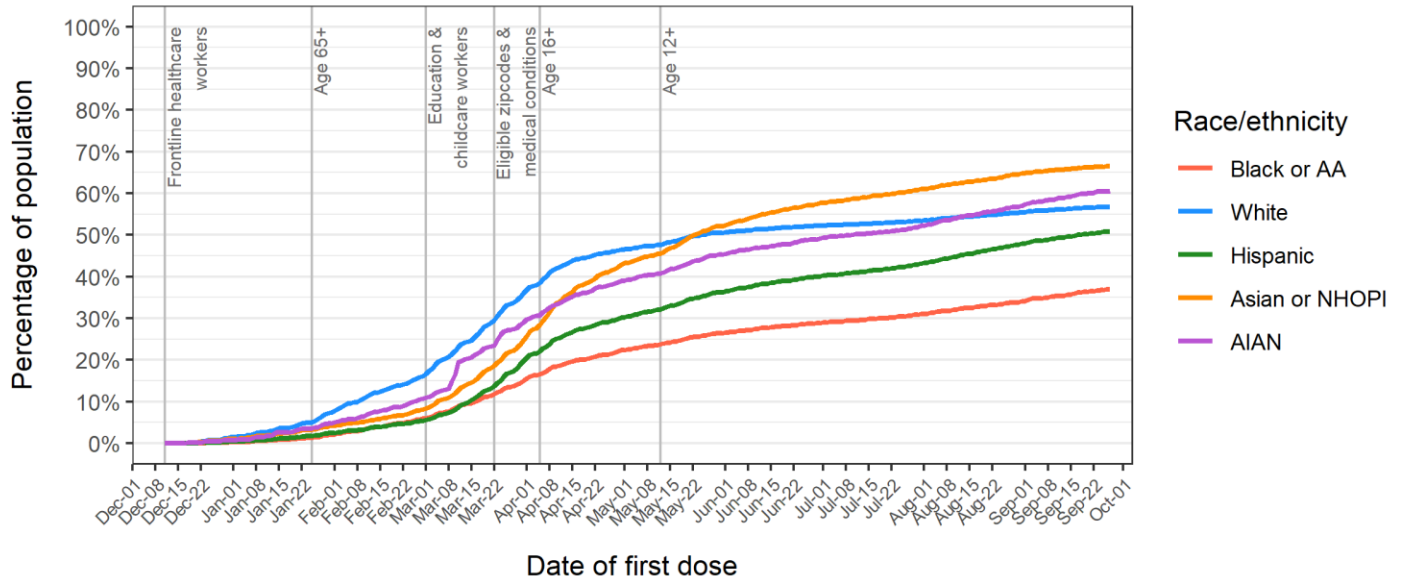


Data source: Wisconsin Immunization Registry (WIR)
Created by the Milwaukee County COVID-19 Epidemiology Intel Team

Proportions of Milwaukee County residents partially and completely vaccinated by race/ethnicity group

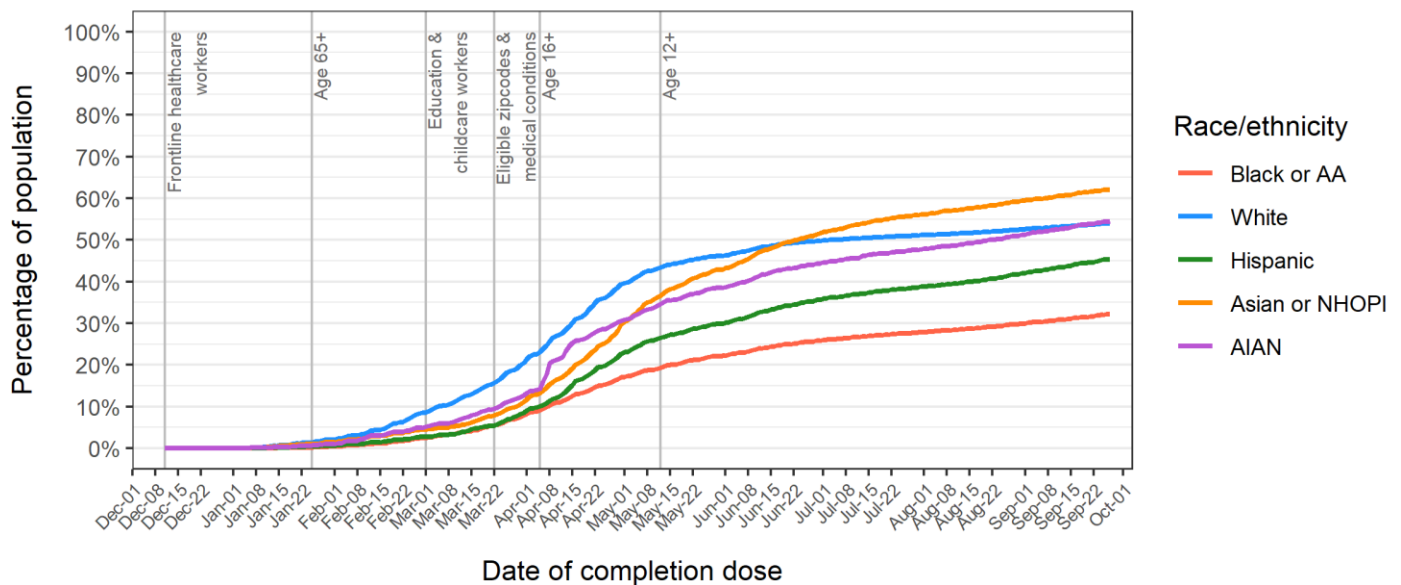
Figure 5 shows the percentage over time of Milwaukee County residents who received at least one dose of any COVID-19 vaccine by race/ethnicity group. **Figure 6** shows the percentage over time of Milwaukee County residents who are completely vaccinated with any COVID-19 vaccine by race/ethnicity group. The vertical lines show changes in vaccine eligibility in Milwaukee County.

Figure 5: Percent of Milwaukee Co. residents with at least one dose of any COVID-19 vaccine



Data source: Wisconsin Immunization Registry (WIR)
Created by the Milwaukee County COVID-19 Epidemiology Intel Team

Figure 6: Percent of Milwaukee Co. residents completely vaccinated with any COVID-19 vaccine



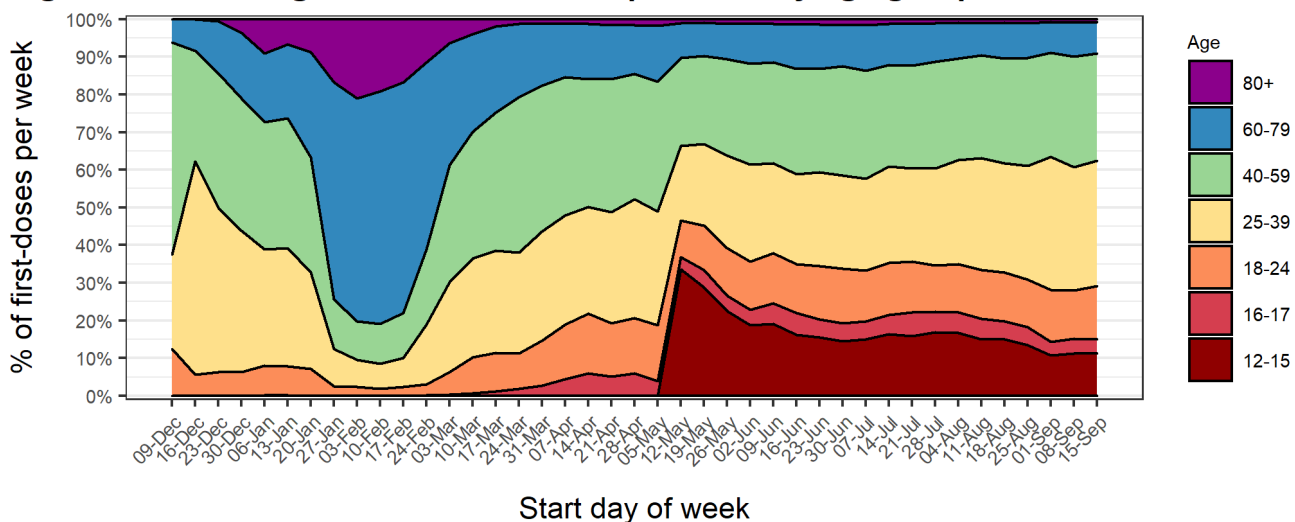
Data source: Wisconsin Immunization Registry (WIR)
Created by the Milwaukee County COVID-19 Epidemiology Intel Team

Percentages of first-doses of COVID-19 vaccine administered to Milwaukee County residents by age and race/ethnicity groups

Figure 7 shows the percentage of first-doses of COVID-19 vaccine administered per week to Milwaukee County residents by age group. After vaccines first became available to healthcare personnel, middle-aged groups (25-59) were the majority of new vaccinees. After eligibility opened up to ages 65+, the oldest two age groups became the majority. The younger age groups (< 60) became the majority of people newly vaccinated since eligibility opened up to education staff on March 1st. With the eligibility of children aged 12+, we observed a sharp increase in vaccination for children.

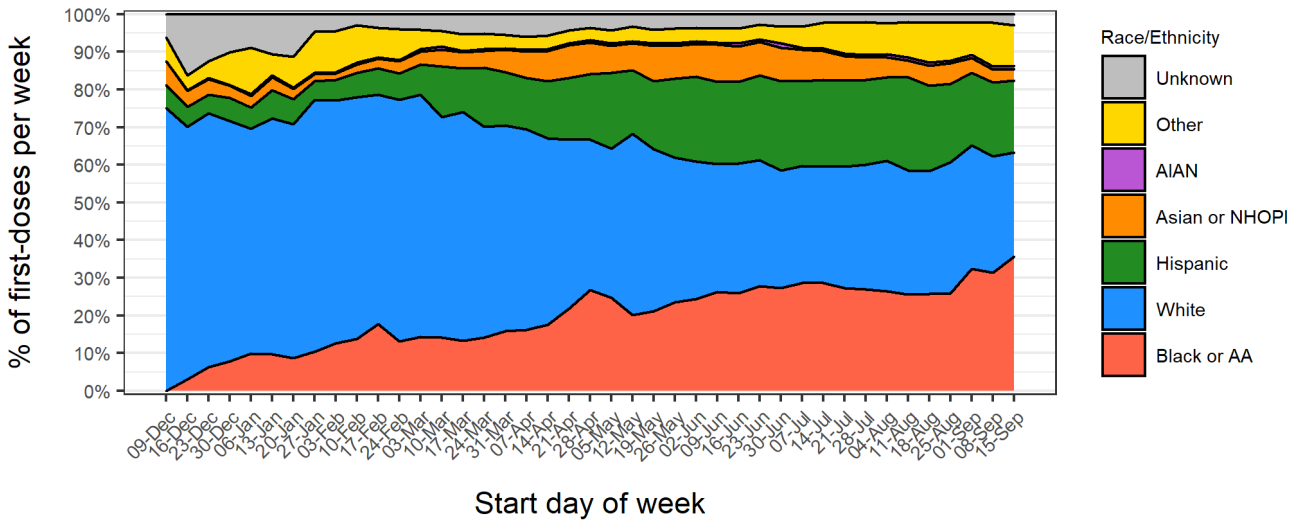
Figure 8 shows the percentage of first-doses of COVID-19 vaccine administered per week to Milwaukee County residents by race/ethnicity. Non-Hispanic Whites were the majority of newly vaccinated individuals for many months, however Black/AA and Hispanic groups have become an increasing proportion of the newly vaccinated over time.

Figure 7: Percentage of total first doses per week by age group in Milwaukee Co.



Data source: Wisconsin Immunization Registry (WIR)
 Created by the Milwaukee County COVID-19 Epidemiology Intel Team

Figure 8: Percentage of total first doses per week by race/ethnicity in Milwaukee Co.



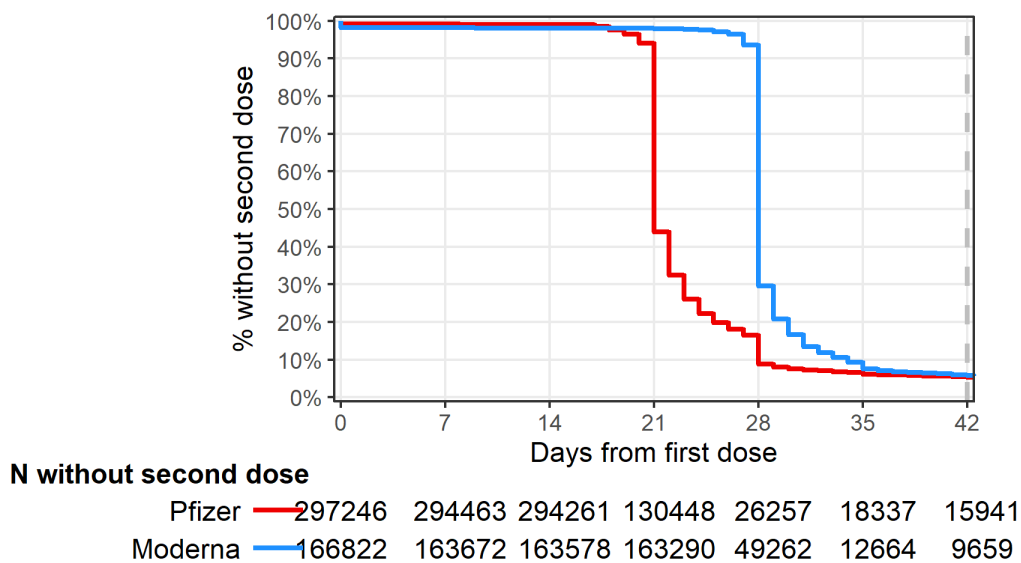
Data source: Wisconsin Immunization Registry (WIR)
 Created by the Milwaukee County COVID-19 Epidemiology Intel Team

Completion of immunization series among Milwaukee County residents who received at least one dose of Pfizer or Moderna vaccines

Figure 9 describes the timing between doses for Milwaukee County residents who received Pfizer or Moderna vaccines. This graph includes data for residents who received their first dose of Pfizer or Moderna at least 42 days ago (prior to August 15, 2021). The recommended interval for receiving the second dose is 21 days for the Pfizer vaccine and 28 days for the Moderna vaccine; the second dose is considered valid if administered 4 days prior to the recommended interval and up to 42 days following the first dose for each vaccine.

Fully 94.5% of all residents who received their first dose of Pfizer prior to August 15, 2021 received their second dose within 42 days, indicating very strong completion within guidelines for those receiving a first dose.

Figure 9: Vaccine series completion among Milwaukee Co. residents receiving Pfizer or Moderna



Data source: Wisconsin Immunization Registry (WIR)
 Created by the Milwaukee County COVID-19 Epidemiology Intel Team

Summary of vaccine series completion rates for Milwaukee County Pfizer and Moderna recipients

Table 1 summarizes the rates of vaccination series completion (Pfizer and Moderna 2-dose series) by groups based on vaccine received, age, sex, and race/ethnicity. This table includes data for residents who received their first dose of Pfizer or Moderna at least 42 days ago (prior to August 15, 2021); 42 days is the maximum recommended period for receiving the second dose. Variation across groups exists, but is relatively minor, with the exception of a small group with unknown sex.

Table 1: Summary of vaccine series completion rates for Milwaukee County Pfizer and Moderna recipients

Characteristic	Percent with second dose within 42 days ¹
Vaccine received	
Pfizer	281,292 / 297,232 (94.6%)
Moderna	157,163 / 166,822 (94.2%)
Age	
12-15	18,192 / 19,300 (94.3%)
16-17	10,445 / 11,154 (93.6%)
18-24	39,367 / 42,937 (91.7%)
25-39	104,258 / 111,355 (93.6%)
40-59	128,009 / 135,586 (94.4%)
60-79	114,743 / 119,168 (96.3%)
80+	23,441 / 24,554 (95.5%)
Sex	
Female	237,979 / 251,103 (94.8%)
Male	199,002 / 211,270 (94.2%)
Unknown	1,474 / 1,681 (87.7%)
Race/Ethnicity	
Black or AA	68,314 / 74,827 (91.3%)
White	244,692 / 254,468 (96.2%)
Hispanic	54,235 / 58,780 (92.3%)
Asian or NHOPI	23,219 / 24,596 (94.4%)
AIAN	2,232 / 2,397 (93.1%)
Other	25,176 / 26,575 (94.7%)
Unknown	20,587 / 22,411 (91.9%)

¹n / N (%)

Data Sources & Acknowledgments

This report was created by faculty and staff in the Medical College of Wisconsin (MCW) Institute for Health and Equity (IHE) in partnership with representatives from local health departments and faculty from the University of Wisconsin-Milwaukee Zilber School of Public Health. Data sources include the Wisconsin Immunization Registry (WIR) and the US Census Bureau.

Contact Information

For additional questions on this report, please contact Darren Rausch, Health Officer/Director, Greenfield Health Department, and Lead, Milwaukee County COVID-19 Epidemiology Intel Team:
Darren.Rausch@greenfieldwi.us or (414) 329-5275.